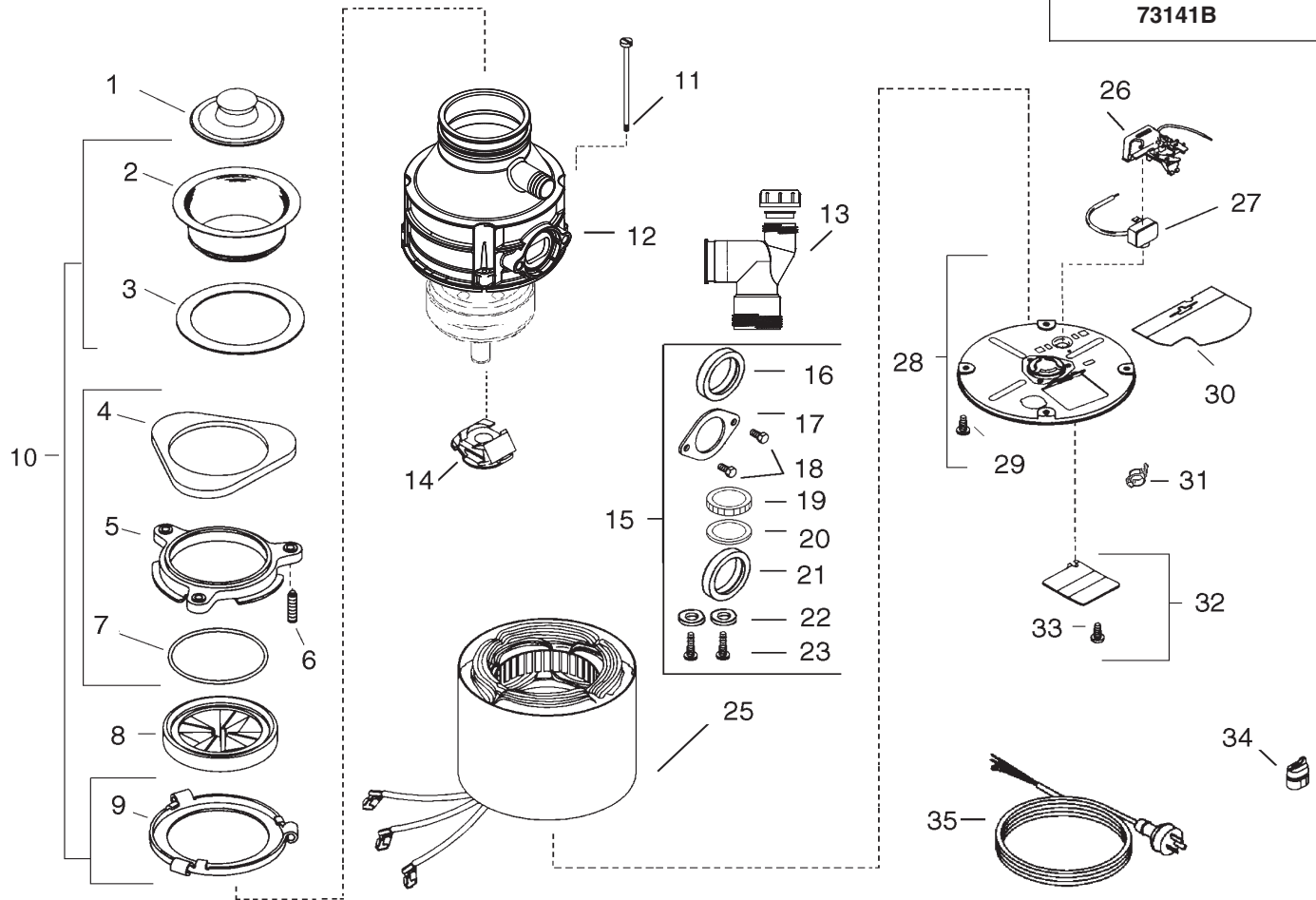


Warranty:	<b>2 Year Full Warranty</b>
hp/Volts/Hertz:	<b>1/2 hp - 230/240V 50 HZ</b>
Production Date:	<b>6/03</b>
Engineer Number:	<b>73141B</b>



**ORDER BY PART NUMBER, NOT CODE NUMBER**

CODE NO.	PART NO.	NO. REQ.	DESCRIPTION	CODE NO.	PART NO.	NO. REQ.	DESCRIPTION
1	IP4310	1	Stopper Assembly	19	N/A	1	1-1/2" Nut
2	N/A	1	Sink Flange	20	N/A	1	Seal
3	N/A	1	Fiber Gasket	21	N/A	1	Gasket (Aust. only)
4	N/A	1	Backup Ring	22	N/A	2	Washer (Aust. only)
5	N/A	1	Mounting Ring	23	N/A	2	19mm Screw (Aust. only)
6	N/A	3	Screw	24	IP4577	1	Service Wrenchette (Not Shown)
7	N/A	1	Snap Ring	25	N/A	1	Stator Assembly
8	IP70368	1	Mounting Gasket	26	IP3706D	1	Start Switch Assembly
9	N/A	1	Body Flange	27	IP2267N	1	Overload Protector
10	IP3173DA	1	Mounting Assy (Incl. Codes 2-7 & 9)	28	N/A	1	End Frame Assembly (Includes Code 29)
11	N/A	4	Thru Bolt	29	N/A	1	Ground Screw
12	N/A	1	Enclosure Assembly (Not Available - Replace Unit)	30	N/A	1	Wire Shield
13	IP73238	1	Tailpipe	31	N/A	1	Overload Guard
14	IP2467A	1	Centrifugal Actuator Assy	32	N/A	1	Terminal Cover Assy (Includes Code 33)
15	IP2638JL	1	Installation Kit (Incl. Codes 16-24 & 36)	33	N/A	1	Terminal Cover Screw
16	IP1470	1	Tailpipe Gasket	34	N/A	1	Bushing
17	IP1461	1	Tailpipe Flange	35	N/A	1	Cord
18	N/A	2	13mm Screw	36	N/A	1	Installation, Care & Use Manual (Not Shown)